



# 725 SOUTHBRIDGE STREET

**WORCESTER, MA**

155,000 SF | **WAREHOUSE/RETAIL SPACE FOR LEASE**

- Subdividable
- Iconic Rotman's Building
- Phenomenal Visibility from and Accessibility to I-290



THE  
STUBBLEBINE  
COMPANY

CORFAC INTERNATIONAL

# PROPERTY SUMMARY



## PROPERTY HIGHLIGHTS

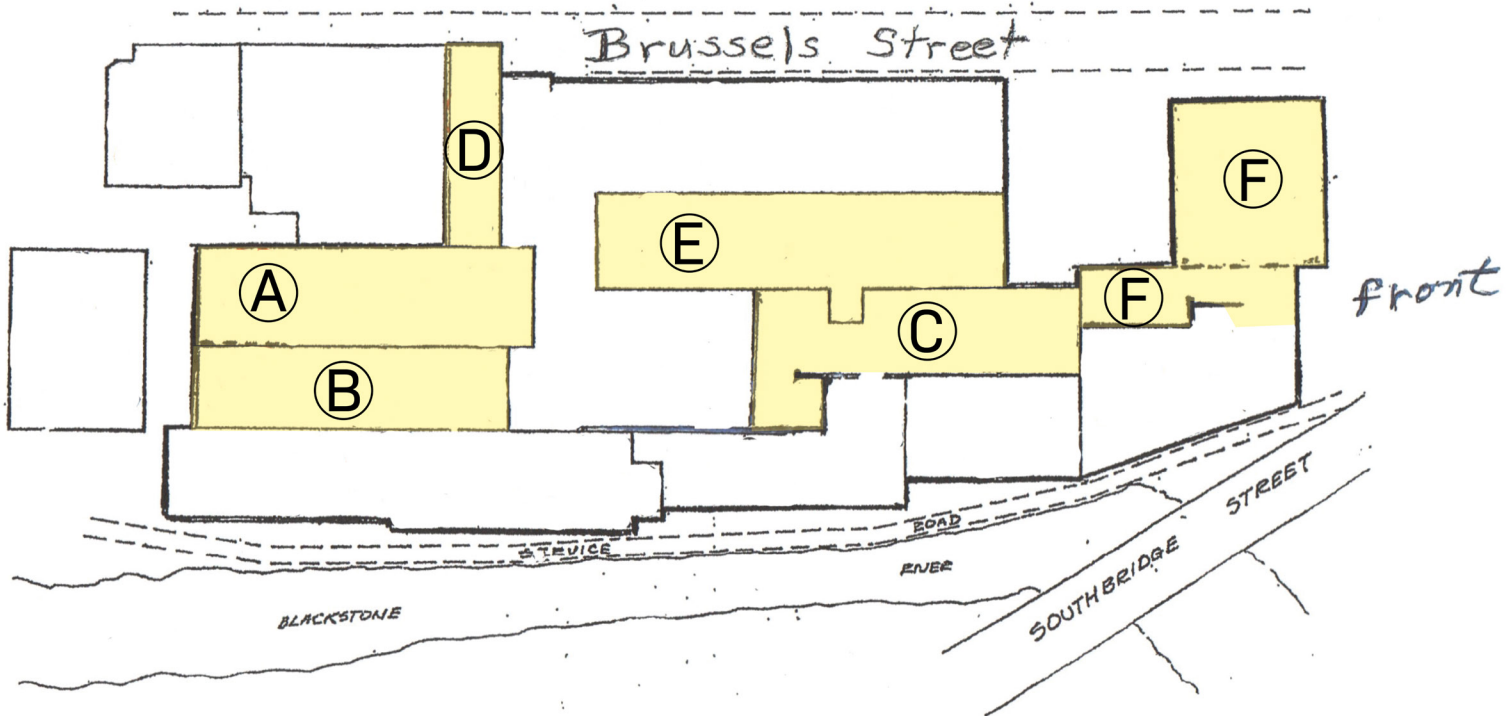
- Subdivides up to 6,000 SF
- 16'-20' Ceiling Height in 80% of the space
- 3 Tailboard Loading Docks
- 1 Drive-in Door
- 100+ Parking Spaces

## OFFERING SUMMARY

Lease Rate:	Sub-dividable from \$4.99/SF NNN to \$7.99/SF NNN	
Available SF:	71,500 SF	
Lot Size:	13 Acres	
Building Size:	250,000 SF	

DEMOGRAPHICS	75 MILES	100 MILES
Total Households	4,350,593	5,397,185
Total Population	10,359,739	12,396,960
Average HH Income	\$101,912	\$97,741

DEMOGRAPHICS	3 MILES	5 MILES
Total Households	58,758	93,469
Total Population	156,882	244,365
Average HH Income	\$70,530	\$82,263



#### SPACE A:

- 22,000 SF Total
- 2 Floors (11,000 SF each) with conveyor belt to 2nd floor
- 16' Clear height
- 1 Dock and 1 grade level door

#### SPACE B:

- 10,000 SF
- 20' Clear Height
- Racked space shared docks and 1 drive-in door

#### SPACE C:

- 9,000 SF Total: 2,500 SF of office and 6,500 SF of showroom
- 20' Clear height

#### SPACE D:

- 3,500 SF
- 1 loading dock

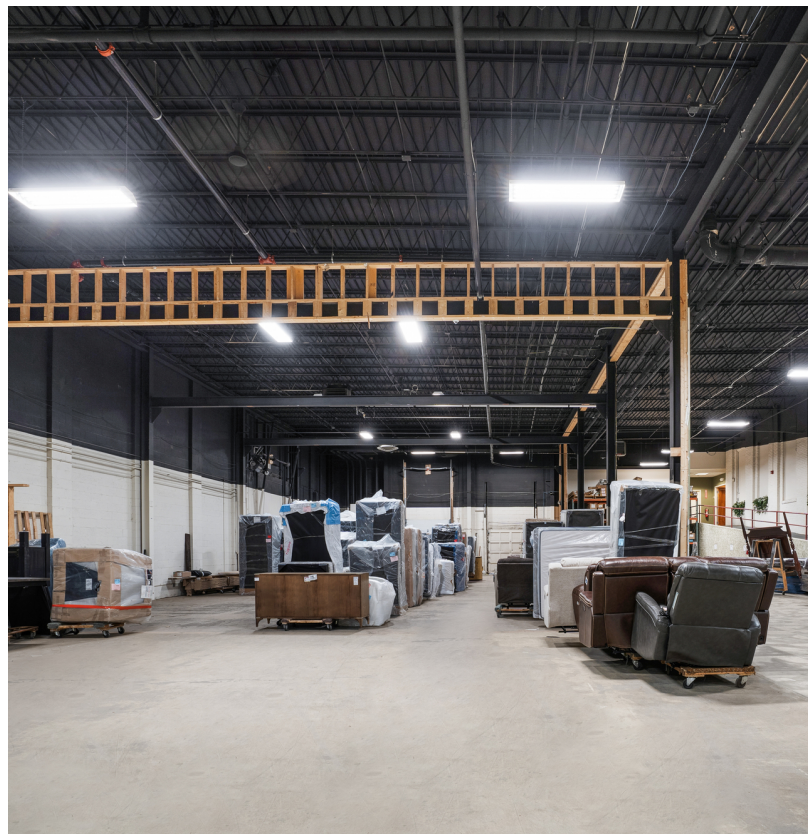
#### SPACE E:

- 14,000 SF Total: 10,000 SF of warehouse and 4,000 SF of showroom
- First level overhead door warehouse

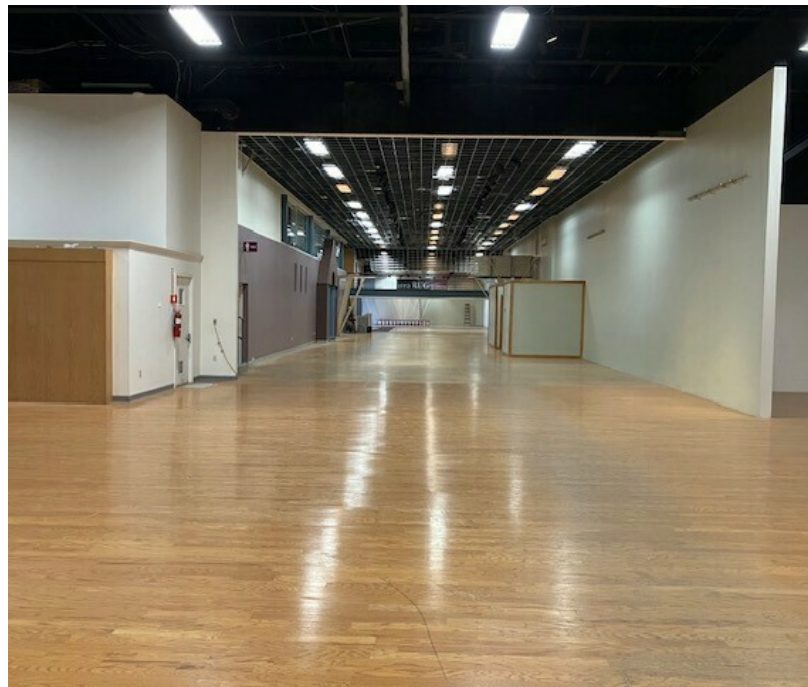
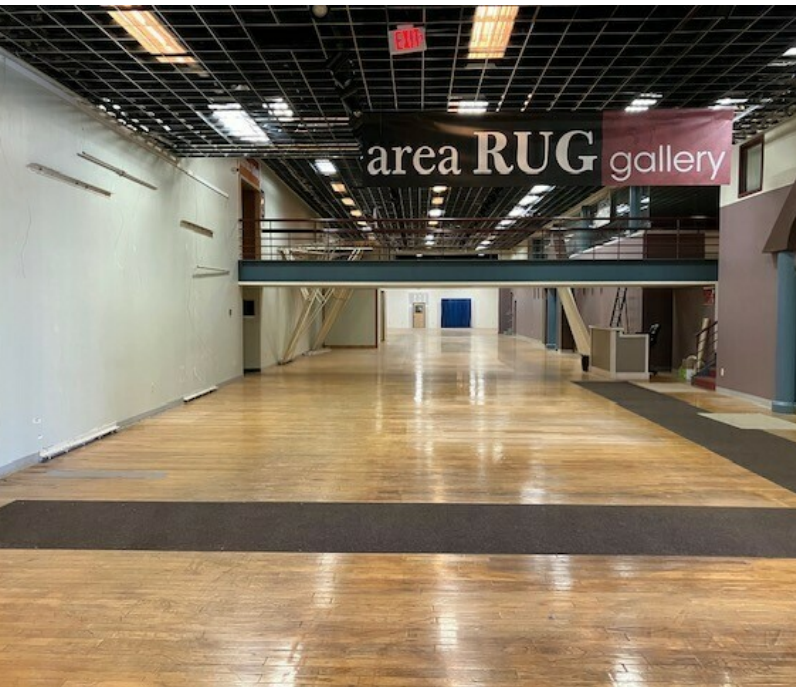
#### SPACE F:

- 13,000 SF Total: 9,000 SF of warehouse and 4,000 SF of showroom/retail
- Located on the first floor at front entrance

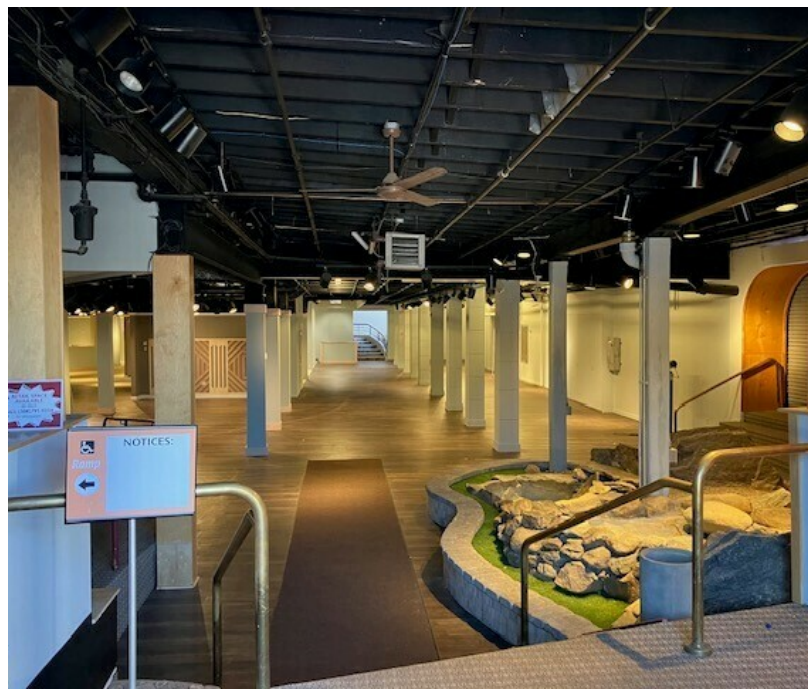
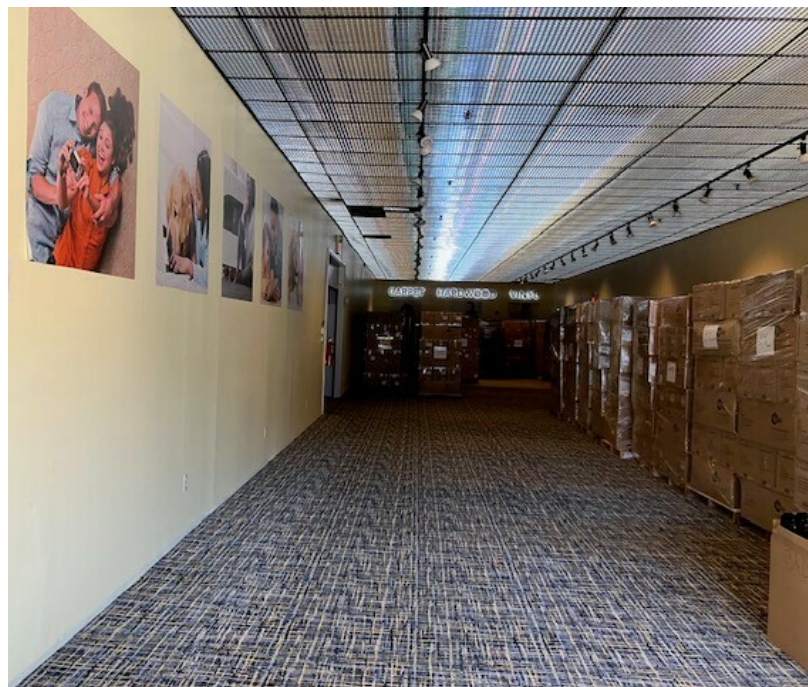
# PHOTO GALLERY



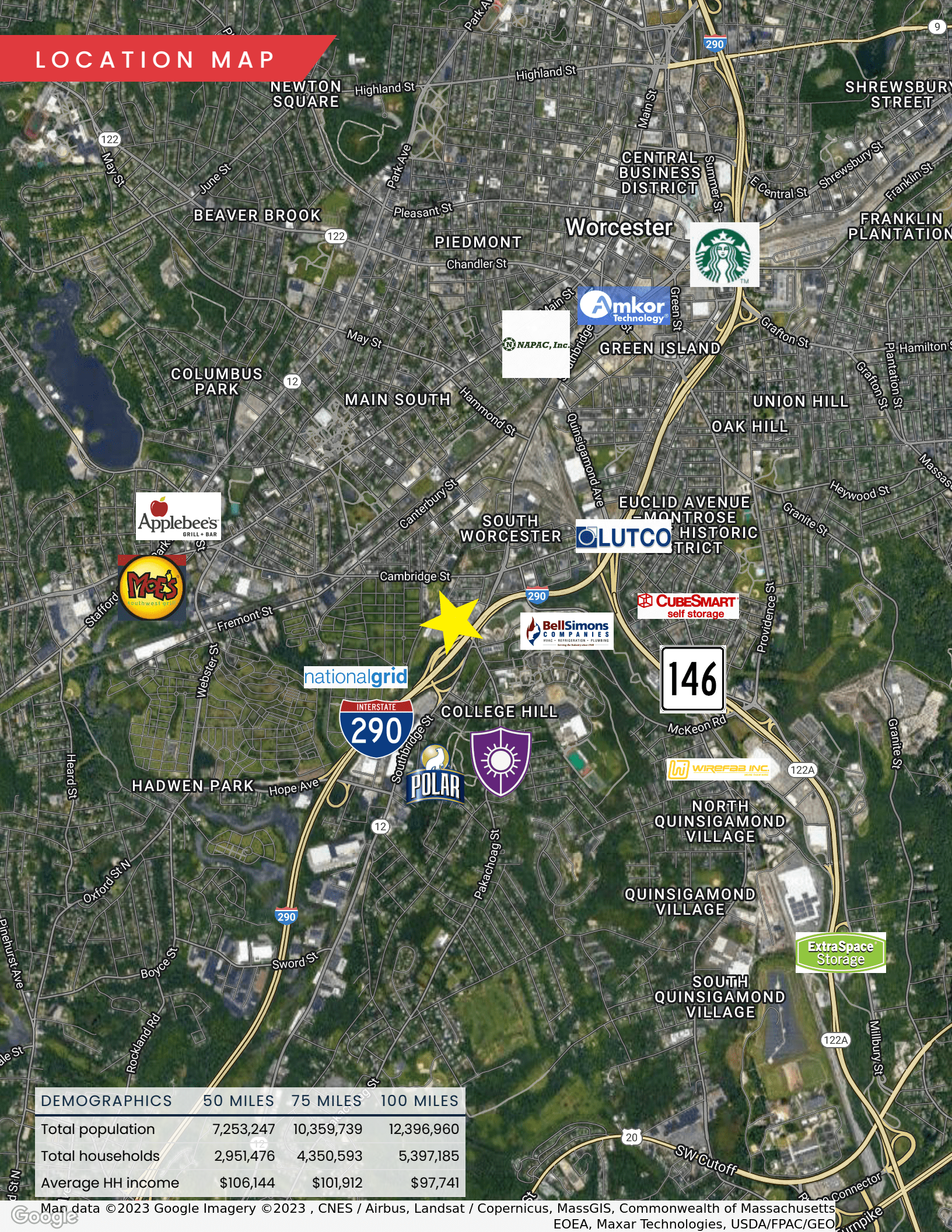
SPACES A-C



SPACE D&F



# LOCATION MAP



DEMOGRAPHICS	50 MILES	75 MILES	100 MILES
Total population	7,253,247	10,359,739	12,396,960
Total households	2,951,476	4,350,593	5,397,185
Average HH income	\$106,144	\$101,912	\$97,741

# 725 SOUTHBRIDGE STREET

## WORCESTER, MA

155,000 SF | HIGH QUALITY WAREHOUSE/RETAIL BUILDING FOR LEASE

**DAVID STUBBLEBINE**

617.592.3391

david@stubblebinecompany.com

**JAMES STUBBLEBINE**

617.592.3388

james@stubblebinecompany.com

**JUSTIN HOPKINS**

808.321.8000

Justin@stubblebinecompany.com

**ALAN RINGUETTE**

978.265.8112

alan@stubblebinecompany.com

**DEVON WAGNER**

978.795.7933

devon@stubblebinecompany.com

**CHLOE STUBBLEBINE**

781.879.2543

chloe@stubblebinecompany.com

We obtained the information above from sources we believe to be reliable. However, we have not verified its accuracy and make no guarantee, warranty or representation about it. It is submitted subject to the possibility of errors, omissions, change of price, rental or other conditions, prior sale, lease or financing, or withdrawal without notice. We include projections, opinions, assumptions or estimates for example only, and they may not represent current or future performance of the property. You and your tax and legal advisors should conduct your own investigation of the property and transaction.



THE  
STUBBLEBINE  
COMPANY

CORFAC INTERNATIONAL